

# Detector

innovative gas detection systems

Improving  
Gas Safety  
With Finnish  
Gas Detection  
Solutions  
20.5.2015

Detector Oy 20.5.2015



## Who are we

- A Finnish private owned share holding company, which is specialised in developing, designing, manufacturing, selling and servicing equipment and purpose made systems for detecting and monitoring gas concentrations in the air
- Established at year 1981
- Residence in Turku in Finland



## Results with values

- Quality assurance with SFS-EN ISO 9001
- Complete Solutions, controllers, detectors, alarm devices, remote alarms, interconnections, uninterruptible power supplies, services, software...
- Affordable Gas Detection Systems, right instrument to right places, digital systems, decentralized and modular systems, life cycle support
- Every customer is important, site specific documentation
- Compatibility with 4-20mA linear output and field buses
- Continuity with experience, more than 30 years on the market





## FOOD INDUSTRY

Oy Gustav Paulig Ab:n Uusi  
paahtimo  
Arla Ingman Oy  
Valio  
Atria  
HK-Ruokatalo  
Saarioinen  
Snellman Oy  
Korpela Oy  
Vaasan & Vaasan  
Fazer Oy  
Olvi Oy  
Oy Sinerbrychoff Ab  
Raisio Yhtymä  
Genencor Oy  
Viking Malt Oy  
Kilon Logistiikkakeskus, Inex  
Partners  
Polarica Oy Ab  
Altia Oyj, Koskenkorvan tehdas  
Lännen tehtaata Oy  
Yrjö Wigren Oy  
Helsingin Tukku Oy, Helsinki

## SHIPS

Mein Schiff 1 - 4(Germany)  
Freedom of the Seas (USA)  
Liberty of the Seas (USA)  
Independence of the Seas (USA)  
Oasis of the Seas (USA)  
Allure of the Seas (USA)  
SuperSpeed 1, Color Line (Norway)  
SuperSpeed 2, Color Line (Norway)  
Viking XPRS, Mariehamn  
Viking Grace, Mariehamn  
Merivoimat, Kaapelivene K-410  
Merivoimat, Kaapelivene K-411  
Rajavartiolaitos, VL Uisko, Turku  
Rajavartiolaitos, VL Tursas, Turku  
Spirit of Britain, P&O Ferries (GB)  
Stena Hollandica, Stena Line (GB)  
Master Ice Fern (Cyprus)  
M/S Finnarrow, Finnlines  
Trawlers in Norway and Iceland

## PROCESS INDUSTRY

Tamfelt Oy  
Fortek Oy  
Stora Enso Oy  
UPM-Kymmene Oy  
Rolls Royce Oy  
Boliden Oy  
OMG Nickel Oy  
Wärtsilä Diesel Oy  
Paroc Oy Ab  
KWH - Mirka Oy  
Orion Oyj  
Noiro Oy  
IDO-Kylpyhuoneet Oy  
Avesta Polarit Stainless Oy  
Kemira Oy  
Outokumpu Poricopper Oy  
Finnish Chemicals Oy  
Arabian tehtaata Oy  
Hackman - Iittala Oy  
Gyproc Oy  
Moventas Parkano Oy  
Mäkelä-Metals Oy  
Metso-Paper  
Outotec Oy  
Yara Suomi Oy  
Ecocat Oy

## SWIMMING BATHS AND SPAS

Spa Caribia  
Spa Eden  
Spa Aulanko  
Swimming Centre Ulpuikka  
Impivaara Spa  
Tapiola Swimming Bath  
Yrjönkatu Swimming Bath  
Tropiclandia Spa  
Kalajoen Hiekkasärkät  
Saariselkä Spa  
Vuokatti Sport Centre  
Kuntoutuskeskus Kapraka  
Vesihelmi Spa  
Tampere Swimming Centre  
Siilinjärven kuntoutuskeskus  
Raksila Swimming Bath  
Pirkkola Swimming Bath  
Kuntoutus- ja liikuntakeskus  
Hämeenlinna Swimming Bath  
Jämsänkoski Swimming Bath  
Kemijärvi Swimming Bath  
Kivimäki Swimming Bath  
Lappeenranta Swimming Bath  
Pyynickki Swimming Bath  
Sotka Swimming Bath

## OIL RAFFINERIES AND FUEL STORES

Neste Oil Oy  
Teboil Oy  
Oilon Oy  
Gasum Oy  
Aspo Oy

## RESEARCH CENTRES AND UNIVERSITIES

VTT Tuotekehitys- ja tutkimuslaboratorio  
Oulun Yliopisto  
Noiro Oy  
Åbo Akademi  
AEL / Insko  
Pirkanmaan Ammattikorkeakoulu  
Tampereen Yliopisto  
Taideteollinen Korkeakoulu  
Kemian osaamiskeskus  
Teknillinen Korkeakoulu  
Jyväskylän Yliopisto  
Nokia Oyj  
Kauhajoen elintarvike ja ympäristöntutkimuslaboratorio  
Peltosalmen maatalousoppilaitos  
Novida - Uudenkaupungin ammattiopisto  
MTT - Maa- ja elintarviketalouden tutkimuskeskus  
Helsingin Yliopisto  
Lappeenrannan teknillinen korkeakoulu  
Heinolan seudun ammattioppilaitos  
Tampereen teknillinen yliopisto  
Joensuun yliopisto  
Turun Yliopisto

## PAINT SHOPS AND CHEMICAL STORES

Nor-Maali Oy  
STX-telakat  
Kankaanpää Works  
Maston Oy  
Ruukki Oy  
Transpoint Oy, ADR-varastot  
Fenestra Oy  
Taerosol Oy  
Pentisol Oy  
Technip Offshore OY  
Sisu-Auto Oy  
Lival Oy  
Sandvik Oy  
Berner Oy

## BIOGAS PLANTS

Päijät-Hämeen Jätehuolto Oy  
Biovakka  
Topinojan biokaasulaitos  
Vambio  
ASJ Stormossen biokaasulaitos  
Tarastejärven Biokaasupumppaamo  
Altia Oy, Biokaasulaitos

## ICE HOCKEY RINKS

Turku-halli  
Hakametsä ice rink  
Espoon Areena  
Espoonlahti ice rink  
Hartwall Areena /ice hall  
Impivaara ice rink  
Jyväskylä ice rink  
Jääkenttäsäätiö ice rinks  
Kalajoki ice rink  
Kauniainen ice rink  
Kempele ice rink  
Kokonniemi ice rink  
Kuopio ice rink  
Kuusamo ice rink  
Kärppähalli, Raksila  
Lappeenranta ice rink  
Linnainmaa ice rink  
Mariehamn ice rink  
Mikkeli ice rink  
Naantali Ice rinks  
Oulu ice rink, Raksila  
Paloheinä ice rink  
Paloka ice rinks  
Rauma ice rink  
Savonlinna ice rink  
Tesoma ice rink  
Tikkurila ice rink  
Vaasa ice rink  
Vantaa ice rink  
Varissuo ice rink  
Vihti ice rink  
Virtain ice rink  
Par Is ice rink

## POWER PLANTS

Haminan Energia Oy  
Kuusankosken aluelämpölaitos  
Fortum Power and Heat Oy  
HUS, Lohjan sairaala  
Lahden Energia  
Keravan Energialaitos  
Virkkalan Lämpö Oy  
Ahveniston lämpövoima  
Alhoniityn lämpökeskus  
Hämeen Sähkö / Iittalan lämpö  
Hämeenlinnan energialaitos  
Jyväskylän energialaitos  
Saarijärven energialaitos  
Tapiolan lämpö  
Tohman lämpö  
Hattulan kunta  
Kumpuniemen Voima Oy  
Meri-Porin voimalaitos

## WATER TREATMENT PLANTS

Helsingin Vesi Oy  
Mussalon jäteveden puhdistamo  
Espoon Vesi, Suomenojan jäteveden puhdistamo  
Oulun Vesi Oy, Kurkelanrannan puhdistamo  
Kuopion jätevedenpuhdistamo  
Lapinlahden jätevedenpuhdistamo  
Poriisten puhdistamo  
Mussalon Satama (Lieteasema)

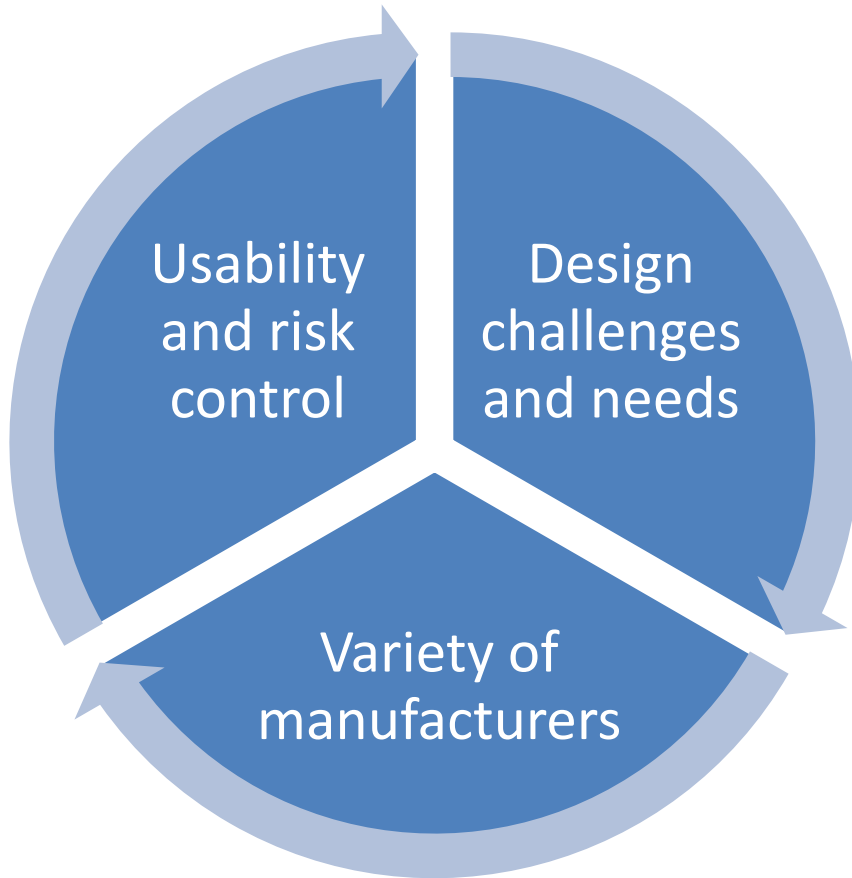
## HOSPITALS AND LABORATORIES

HUS, Peijaksen sairaala  
HUS, Lastenlinna  
Lapin keskussairaala  
TYKS, PET keskus / Magneettikuvaus  
Pohjois-Karjalan sairaanhoitopiiri, keskussairaala  
HUS, Biomedicum  
Satakunnan Keskussairaala  
Porvoon sairaala  
Työterveyslaitos  
TAYKS, Pikonlinnan sairaala  
Etelä-Karjalan keskussairaala  
Kanta-Hämeen keskussairaala  
Keskuslaboratorio Oy  
Kotkan keskussairaala  
SPR / Veripalvelu  
Uudenmaan Aluetöterveyslaitos  
Vaasan Keskussairaala  
Säkyän terveyskeskus  
Keravan terveyskeskus  
Lauttasaaren terveysasema  
Vantaan Lääkäriasema  
Röntgentutka Oy, Koskimagneetti

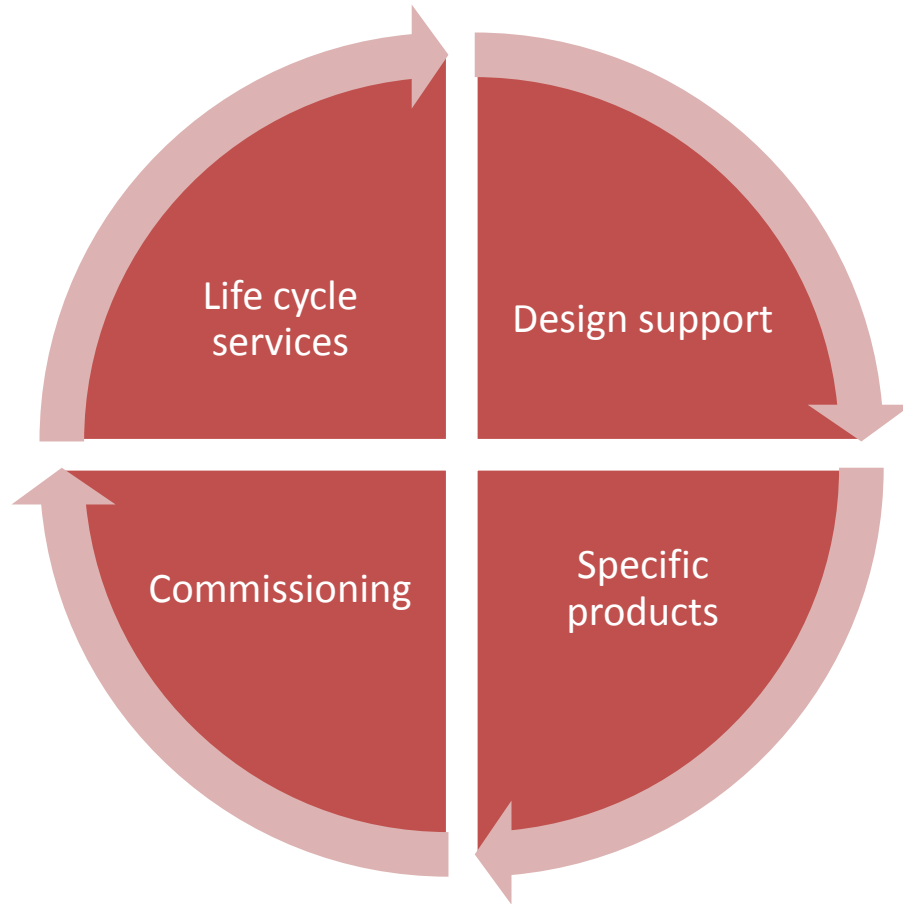
- Partnership contract established at the end of 2014 with NAFFCO FZCO, the leading fire safety supplier in the Arab Emirates



## Growing Safety Challenges



- Increasing size and complexity of gas operated systems and sites
- Changes in standards and safety requirements
- Adoption and control of various manufacturer and site specific technologies and procedures
- Demands for risk management and traceable testing
- Safety concerns during site construction



- Support at early stages of safety system design
- Wide selection references, designs and solutions to specific needs
- Resources to research and design a feasible solution
- Testing and calibration documentation available online, anytime
- Support for commissioning and initialization of systems

- Installation in ATEX zone 0, 1, 21, 2 and 22, rugged construction and standard signalling for straightforward design and installation
- Non-intrusive calibration with support services relieve maintenance challenges and cost



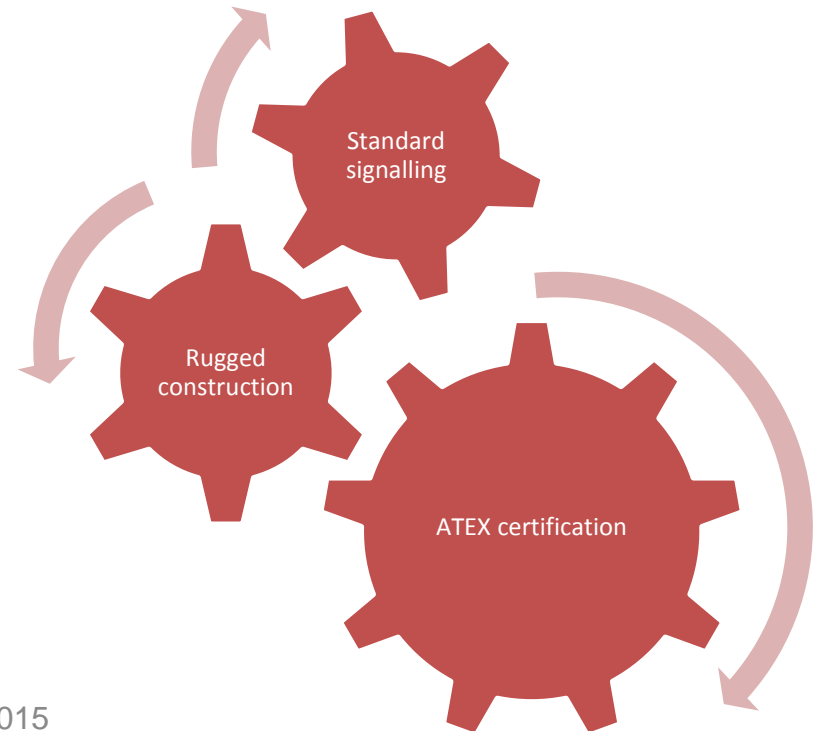
II 2 G Ex d IIC T6



II 2 D Ex tD A21 T85 °C IP 65



II 1 G Ex ia IIC T4

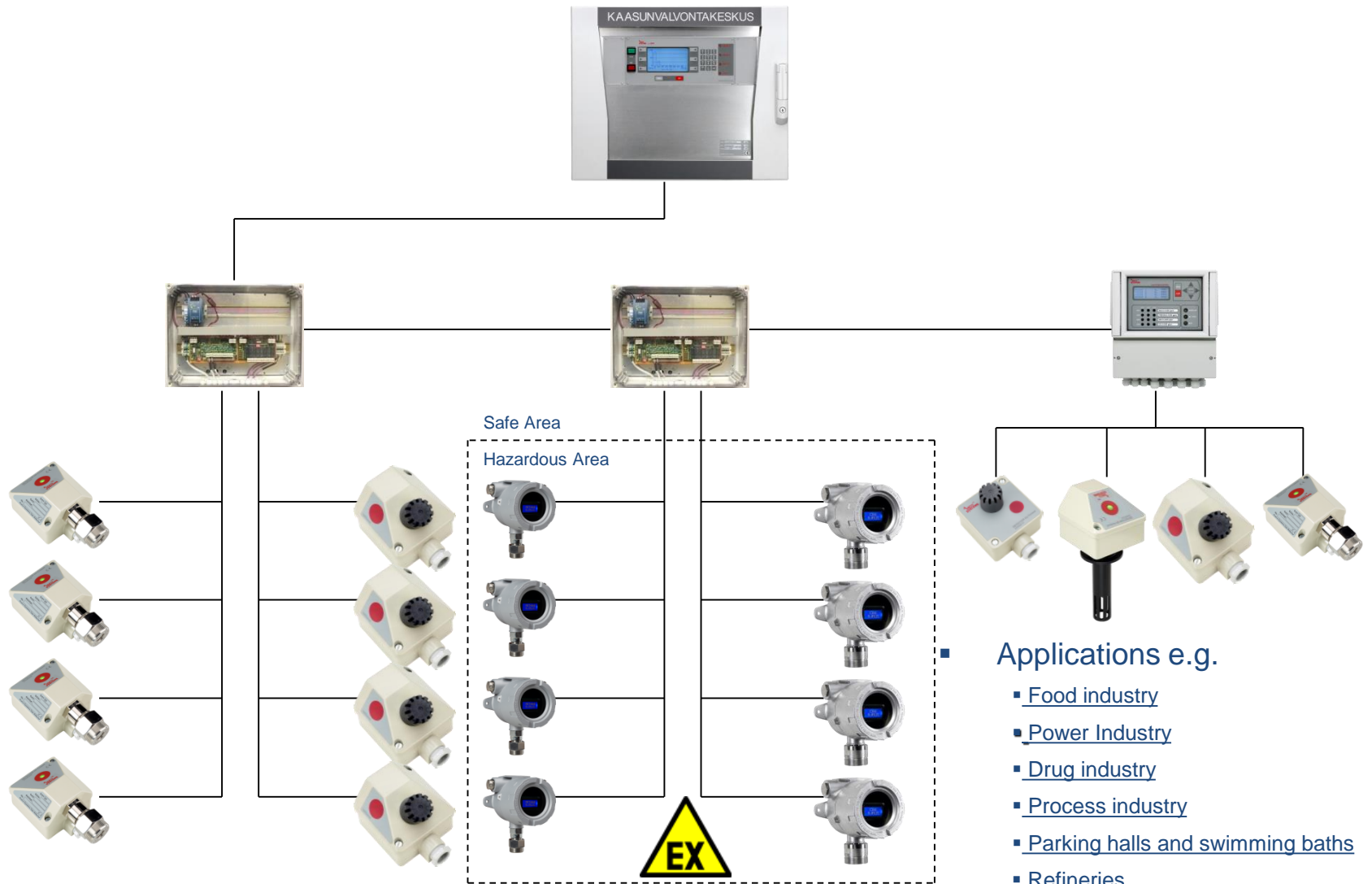




## SCAN Series Controllers



## Decentralization





### IR Communicator 2 ia

for non-intrusive calibration in ATEX zone 0, 1 and 2

 II 1 G Ex ia IIC T4 Ga



### IR Communicator 3 (IRC3)

for non-intrusive calibration in safe areas  
parameter configuration  
reporting





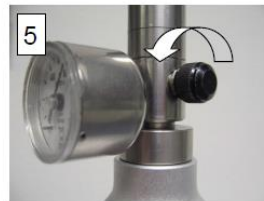
### Protection Enclosures

Double skin for splash proof protection  
AISI 316

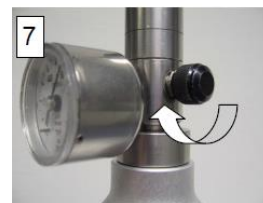




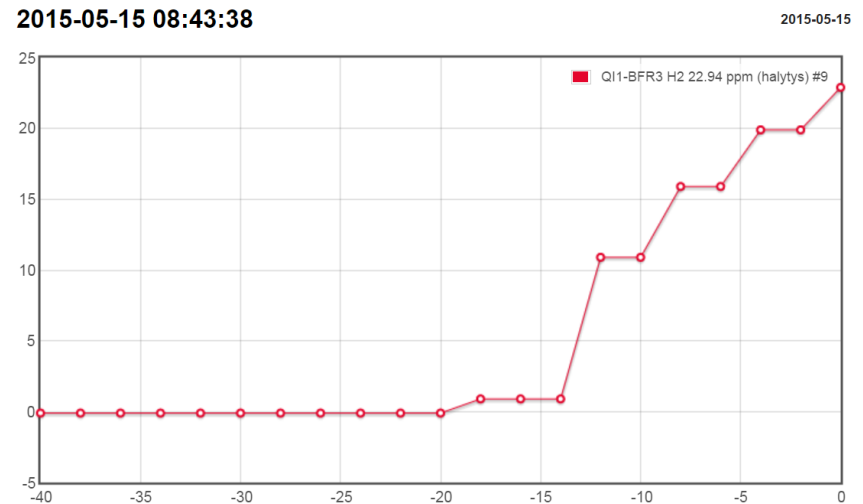
- Wide range of test and certified calibration gases available
- Light weight aluminum cylinders with 34, 58 and 110 normal litre capacities
- Large volume high pressure containers also available
- Easy to use flow valves and regulators
- Detector product specific smart fit sensor head adapters for fast and repeatable test and service work



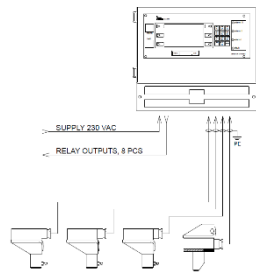
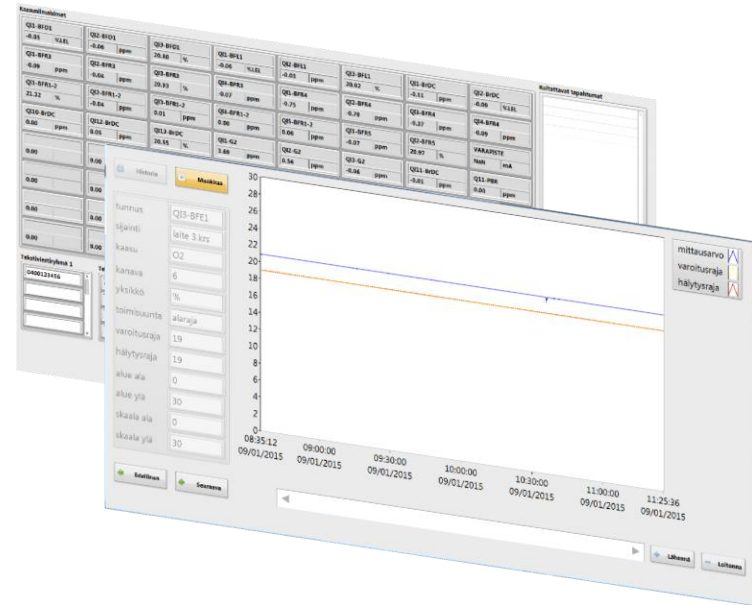
0,5...1 l/min 2 min  
 1 % CH4 = 17...23 % LEL  
 2,5 % CH4 = 45...55 % LEL  
 → OK



- Calibration reports
- Online documentation
- Gas detection events
- Maintenance and operation logs



- PC based remote displays and datalogging solutions
- Field buses, ethernet and GSM SMS communication



## Product Support Materials and Documentation

- Technical product brochures
- Manuals
- Application references
- Website

## Survey and documentation of Customer Needs

- Acquaintance of site
- Evaluation of site hazards and risks
- Evaluation of possible safety solutions to lower risk
- Interfaces and site automation systems

## Quotation Documentation

- Solution description, how the proposed equipment lowers the risk
- Cost estimation, maintenance evaluation
- Delivery and commissioning schedule

## Delivery and Installation Documentation

- General Arrangement
- Product user manuals and installation instructions
- System cabling and interface connection diagrams

## Installation Inspection and Commissioning Support

- Transferring responsibility from installing party to user party
  - Installation report
  - Commissioning report





### On-site Service Work

- Preparation
- Permissions
- Proof and bump tests
- Documentation
- Responsibility

### Calibration and Maintenance Principles

- High and low calibration points, measurement span versus alarm limits
- Testing versus calibration, when to calibrate, why to test

### Test Gas and Calibration Equipment Handling, Safety

- Pressurized containers
- Regulator, air flow, adapter and hose
- Gas selection, gas mixtures with oxygen or nitrogen balance
- Direct actuation of safety measures in case of alarm
- Disabling alarms and removal of them
- Personal protection and awareness of possible danger



- Principles and purpose
  - Responsibilities and possibilities
  - Safety
- Collection of contact information
  - Electronic form
- Preparation of authorization
  - Authorization number
- Delivery of authorization licenses
  - Personal license card
  - License number is used as calibration operator identifier in IR communicator 3
    - License holder is responsible for correct calibration and parameter operations
    - License number is shown on calibration reports to identify operator, which is mandatory for safety related equipment
    - Equipment serial number and calibration operator identifier are needed to identify possible causes of malfunction





**Thank You!**